

Turama

AVAILABLE FOR PRIVATE CHARTER



ONE OF THE WORLD'S MOST LUXURIOUS & EXCLUSIVE MEGAYACHTS

The *TURAMA* is uniquely equipped to make your special occasion even more memorable. From the moment you arrive on board, you will be pampered by our highly trained staff, always with the universal language of the smile. Wherever you cruise you will find the time to explore, relax or simply enjoy being alone at sea.



You can stop for a quiet swim, visit ports, take excursions or visit historical sites - all meticulously designed to meet your personal requirements and arranged by our specialist teams.

On board our world famous chefs present exquisite meals served in grand style, either in the formal dining room or out on deck 'alfresco' enjoying the view.

Turama



Main Salon



Dining Room



'Long Bar'



Reception



Bridge



Fine Dining



'Library'



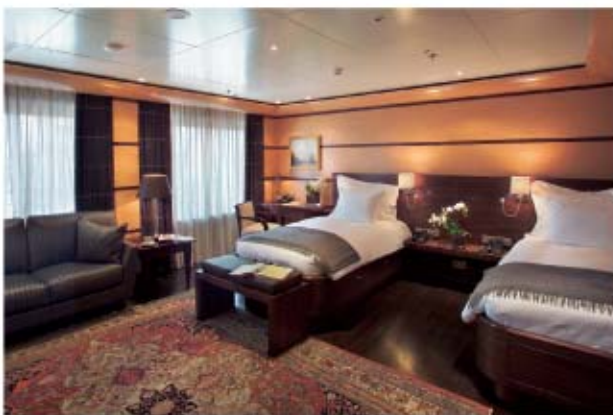
Pool and Jacuzzi



Symbol of Luxury



Art Collection



V.I.P. Suite



Conference Theatre



Home Cinema



Guests' Cabin



'Long Bar' Lounge Area



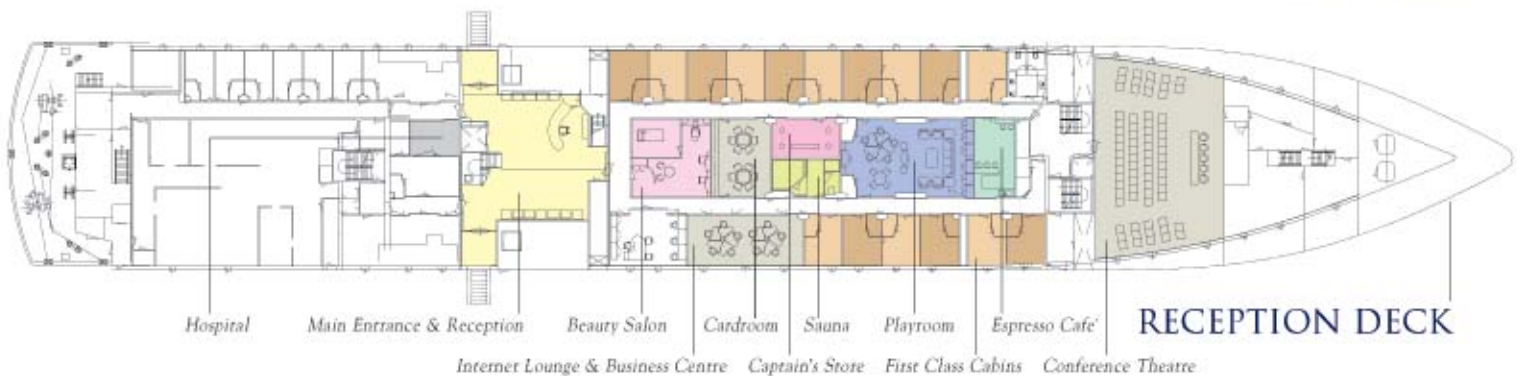
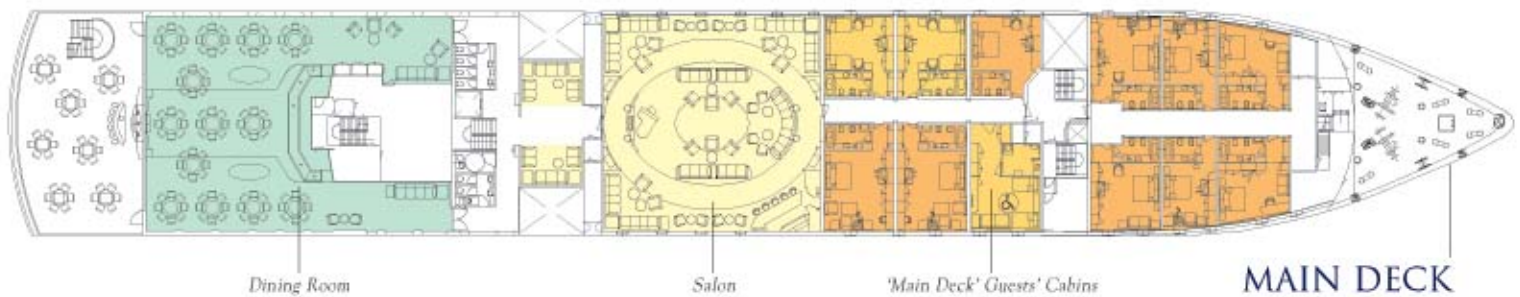
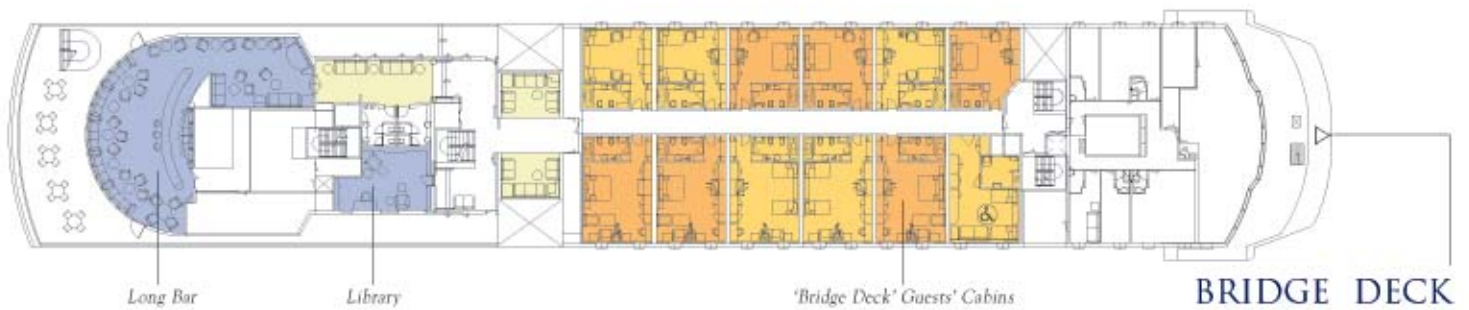
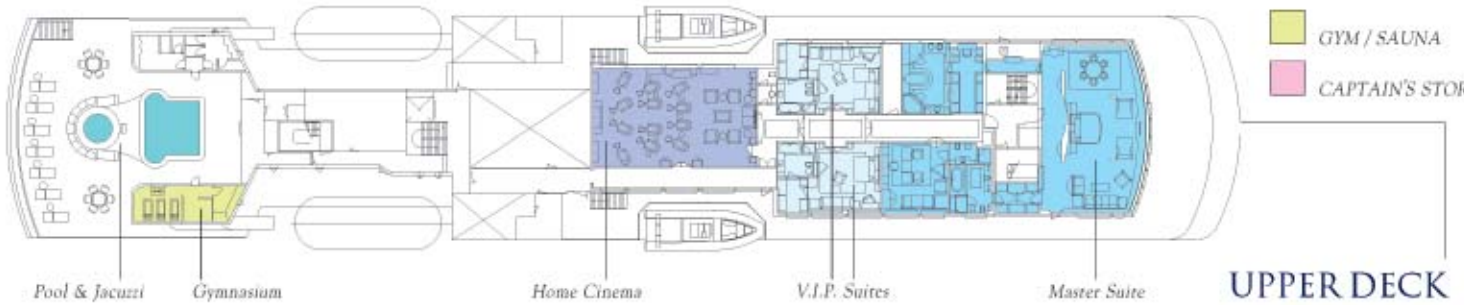
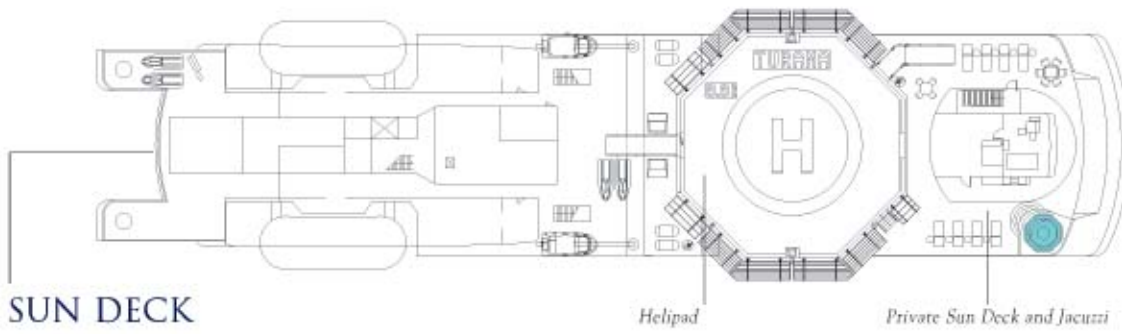
Master Suite Bathroom



Excellent Service

GENERAL ARRANGEMENT PLAN

- LOUNGES
- ENTERTAINING
- MASTER SUITES
- DINING
- BUSINESS
- GUESTS' CABINS
- FIRST CLASS CABINS
- BEAUTY SALON
- HOSPITAL
- GYM / SAUNA
- CAPTAIN'S STORE



Turama

Turama

TECHNICAL SPECIFICATIONS



ACCOMMODATION

1 Master Suite with his & hers bathrooms and dressing rooms ensuite salon and connecting to:

2 Junior Master Suites with queen-size beds, spacious sitting areas, and en-suite bathrooms.

24 Luxury Double and Twin V.I.P. Suites (40m²) each with marble bathroom and jacuzzi

16 Single First Class Cabins with en-suite bathroom

CREW: 60 Crew

FACILITIES & ENTERTAINMENT

- Piano salon / discotheque
- 12 Seat private cinema / conference room
- 12 Seat meeting room / boardroom
- 80 Seat conference theatre / exhibition space
- Swimming pool and 2 jacuzzis
- Gymnasium and Sauna
- Beauty Salon
- Wi-Fi in all public areas
- Internet Lounge and business centre
- Well stocked library
- Childrens playroom with television and video game systems
- On Board Hospital
- Fully Certified Helipad
- 2 x 8.5m Inflatable rigid hull tenders - capacity 24 persons
- 1 x 6.5m Inflatable rigid hull tender - capacity 12 persons
- 4 Wave Runners

TYPE

Full displacement twin screw motor vessel

DIMENSIONS

L.O.A: 117.3 Metres (385 ft)

BEAM: 17.22 Metres (56 ft)

DRAFT: 4.6 Metres (15 ft)

PERFORMANCE

CRUISING SPEED: 15 Knots

RANGE: 10,000 NM

TONNAGE

GROSS: 8343 tons

NET: 2502 tons

YEAR BUILT 1990

CONVERTED 2004

CONSTRUCTION

Welded Steel with teak decks

BUILDER

Rauma Yard, Finland

CLASSIFICATION

LRS; Lloyds 100 A1 Passenger Ship, LMC, UMS

FLAG

Malta
